



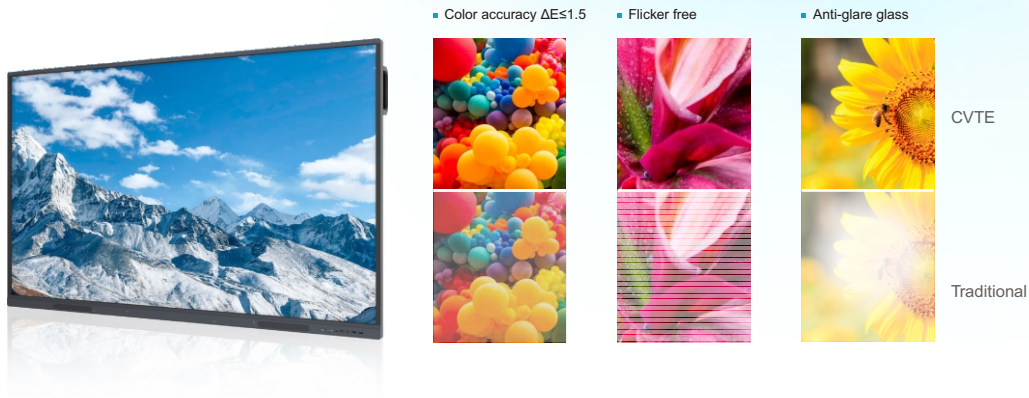
## ELEVATE YOUR CLASSROOM WITH THE MOST QUALITATIVE & AFFORDABLE NEW-GEN IFPDS



- 4K**  
4K Ultra HD
- Multi-Touch**
- H8 Hard Toughened Glass**
- Plug & Play**
- In-built Speakers**
- PC Compatible**
- Android In-built**
- 8 Microphones (optional)**
- HDMI Support**
- USB Support**
- High Durability**
- Teaching Aid Tools**
- Gesture Recognition**
- Multi-OS Support**
- Wide Viewing Angle**
- 48 Megapixels Camera**

# Stunning 4K UHD Visuals

Experience ultra-accurate color details, amazing screen performance and advanced viewing comfort you won't find anywhere else. Smart light sensor provides the best possible viewing experience.



# Powerful Antibacterial Feature

Officially certified by SGS, the buttons and writing pens of CE series can fight common germs accumulating on the display surfaces to protect teachers and students.



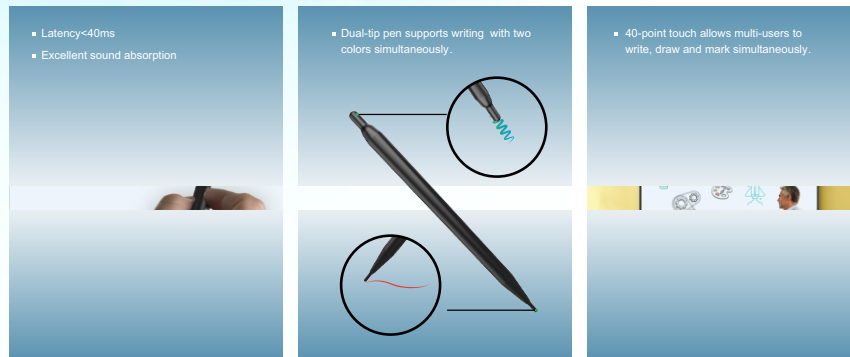
# Slim, Sleek Appearance

Maximize the screen ratio with an ultra-lightweight system. The 3mm glass and the 3-in-1 highly integration mainboard ensures you get more out of your display.



# Fluid and Natural Writing Experience

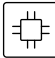
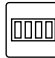
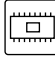

Extra fine nibs and low latency ensure every stroke of your pen feels smooth and natural. The dual-tip pen supports users to write with two colors. The 40-point touch enables multi-users to write or draw at the same time using stylus or their fingers.



# Advanced Android 13 & 14 OS

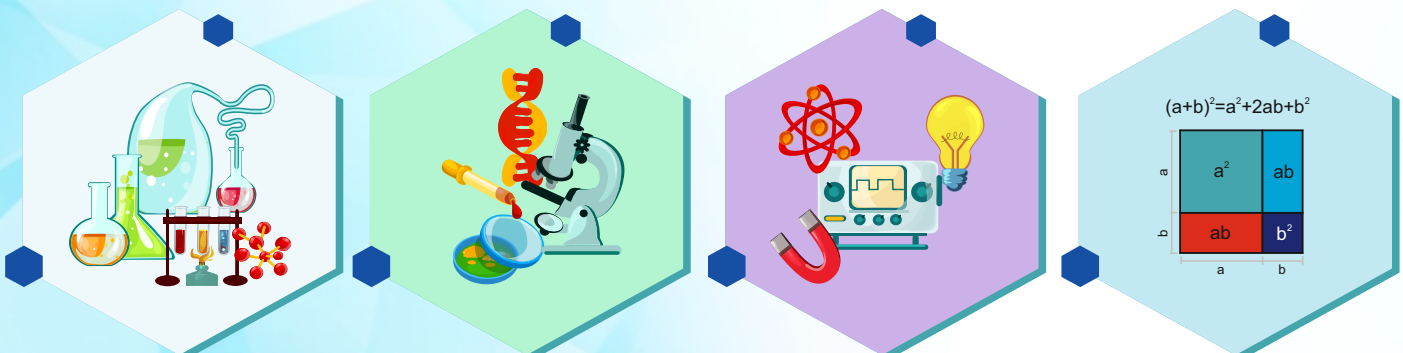
Smooth and efficient interaction, enabled by the built-in OS.



-  Quad core & Octa core CPU
-  4/8/16 GB RAM
-  32/64/128 GB ROM
-  A/B seamless OTA upgrade

# Virtual Lab Application for Physics, Maths & Chemistry

Interactive research-based simulations for physics, chemistry and Maths to use in K-12 and college STEM education.





## Display

	Model 1	Model 2
Model	Model 1	Model 2
Panel Size	65"/75"/86" - MODELS	65"/75"/86" - MODELS
Display Area (mm)	65" - 1428 x 803mm 75" - 1650 x 928mm 86" - 1895 x 1066mm	65" - 1428 x 803mm 75" - 1650 x 928mm 86" - 1895 x 1066mm
Aspect Ratio	16:9	16:9
Native Resolution	3840 * 2160 Pixel (4K)	3840 * 2160 Pixel (4K)
Colors	1.07B(10bit)	1.07B(10bit)
Brightness	65" ≥ 350 - 450 cd/m2; 75" ≥ 350 - 450 cd/m2; 86" ≥ 400 - 500 cd/m2	65" ≥ 350 cd/m2; 75" ≥ 350 cd/m2; 86" ≥ 450 cd/m2
Contrast Ratio	1200:1/4000:1	1200:1
Response Time	4ms	8ms
Refresh Rate	60 Hz/120Hz	60Hz
Life Time	≥50000 h (Min.)	≥30000 h (Min.)
Viewing Angles	178° (H)/178° (V)	178° (H)/178° (V)
Flash	32/64/128 GB	32/64/128 GB
Cover Glass Bonding	Zero Bonding	Zero Bonding
Cover Glass hardness	H9	H8

## Power

Power Consumption	65"" - Maximum ≤ 400 W 75"" - Maximum ≤ 450 W 86"" - Maximum ≤ 500 W Standby Mode ≤ 0.5 W
Working Voltage	AC 100-240V, 50/60Hz

## Operating System

Android Version	Android 13
RAM	4/8/16 GB
<b>Optional Module</b>	
Wireless connectivity	Wi-Fi +BT
Ethernet	10M/100M/1000M

## Audio

Speaker	Model 1 - 20W*2 Model 2 - 16W*2
---------	------------------------------------

## Touch System

Touch Surface	Anti-Glare, Anti-Fingerprint, Antimicrobial Tempered Glass	
Touch Point	Model 1	Model 2
Android	20 Points	10 Points,
Windows	40 Points	20 points
Touch Technology	Advanced IR	
Touch Response time	≤4ms	
System	Android, Windows, Mac, Chrome OS	

## Bundle Software

Calendar, Google Playstore Chromium, Classroom Share, Eshare Pro, File Commander, Calculator	Split Screen Display management Software Memory Cleaner, Office Suite, WhiteBoard, Recorder, Calculator
--	---

## I/O Ports

Model 1	Model 2	Model 1	Model 2
HDMI	3	AUDIO IN	1
VGA	1	RS232	1
USB 2.0	4	RJ45	1
USB 3.0	2	HDMI OUT	1
USB TOUCH	2	EARPHONE	1
USB TYPE C	1	SPDIF OUT	1
		OPS SLOT	1

## ANDHRA PRADESH

Flat No. 101, GKR Towers, 1<sup>st</sup> floor,  
Beside Gandhi Statue, MG inner Ring Road,  
Reddipalem, Guntur - 522509. A.P., INDIA.

## TELANGANA

D - 140, Phase 3, IDA, Opp.Stanvalves,  
Srinivasa Nagar, Jeedimetla,  
Hyderabad - 544455.Telangana, INDIA.

## KARNATAKA

1<sup>st</sup> Floor, B-Block, Brigade Tech Park,  
Pattandur Agrahara, Whitefield,  
Bangalore - 560066., Karnataka INDIA.

## CALL US ON

Telangana : **9160 797 103** | **94907 97875** | Andhra Pradesh: **77998 89993** | **90523 91740**

Karnataka: **9000 1212 19**

e-mail us : [info@crowntechno.com](mailto:info@crowntechno.com) | visit us : [www.crowntechno.com](http://www.crowntechno.com)